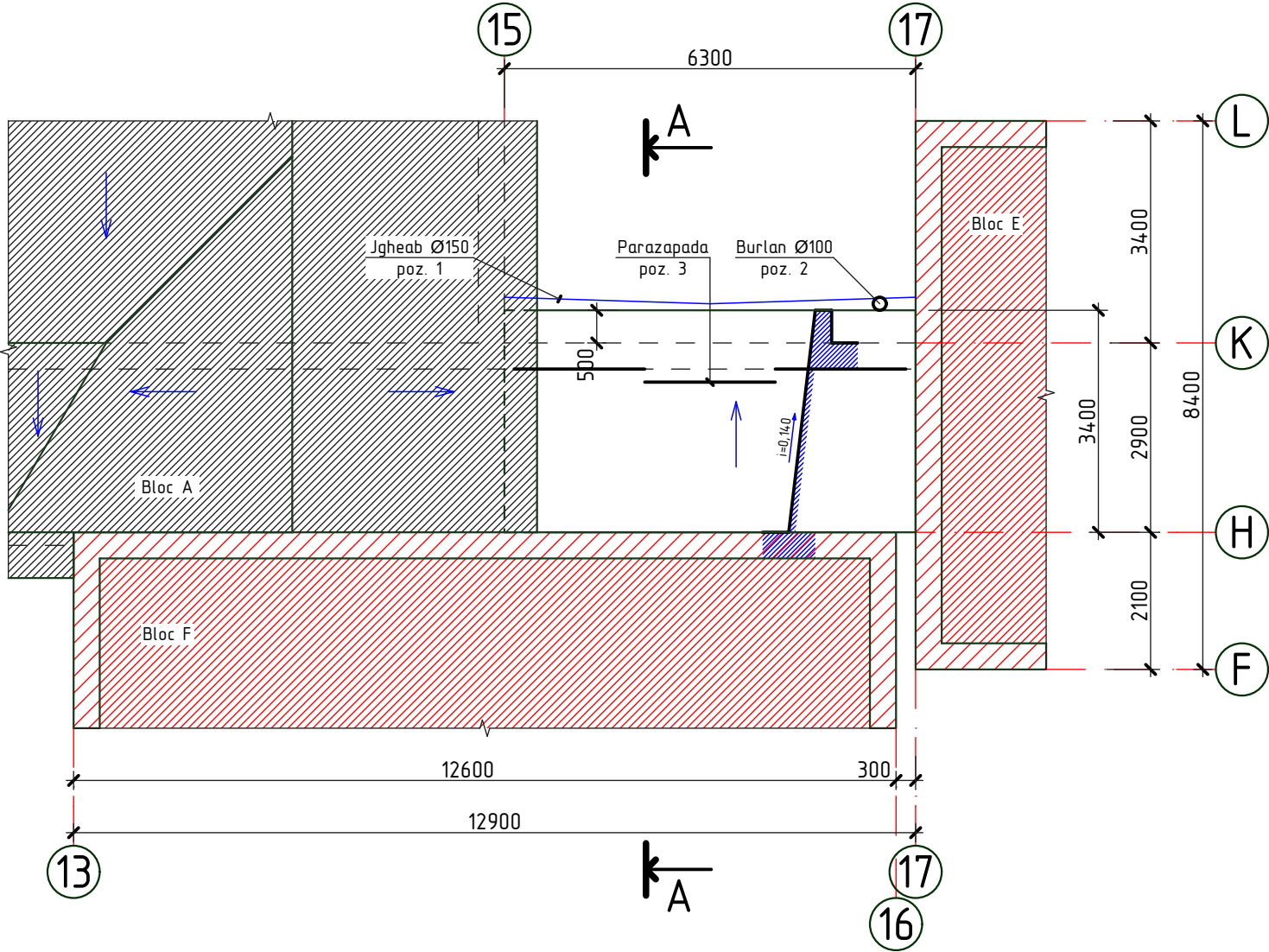


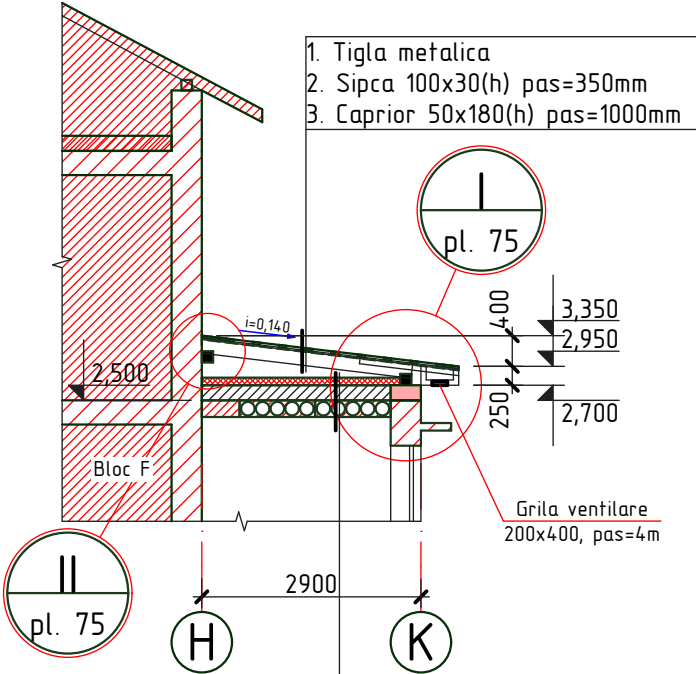
Plan acoperis

sc. 1:100

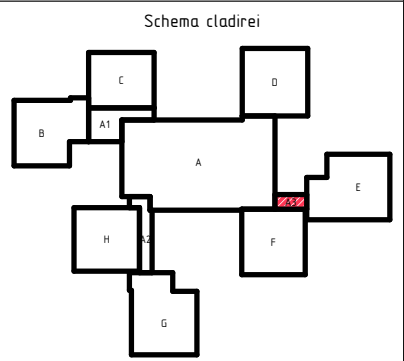


Sectioniunea A-A

sc. 1:100



1. Membrana antivânt "TEND"
2. Termoizolant: vata minerala bazaltica, ignifuga $\gamma=125 \text{ kg/m}^3$, $\lambda=0,037 \text{ W/mk}$, $\delta=100\text{mm}$
3. Membrana contravapori "TEND"
4. Invelis existent de acoperis $\delta=250\text{mm}$
5. Planseu existent



1. Specificatia materialelor vezi pl. 76.

2020	28.07-D/20-SAC			Reparatia capitala a acoperisului scolii primare nr. 21 "S. Vangheli" din str. Tudor Vladimirescu 16		
A.S.P	Mihaila V.		07.20	Scoala primara	faza	plansa
I.S.P	Hihlat Em.		07.20	Bloc A3	PE	74
Elaborat	Mihaila V.		07.20	Plan acoperis. Sectioniunea A-A	"GEO-CAD-PROIECT" mun. Balti	